

Social, Detour, Controversy



- ▶ Josh Grab
- ▶ 517-241-4548
- ▶ grabj@michigan.gov

1

Social, Detour, Controversy

- ▶ Deal with the human side of environmental concerns
- ▶ Look at the project design details
 - ▶ The project Footprint is a Secondary Concern
- ▶ Reviews rely heavily on the PM Environmental Questionnaires
 - ▶ More Information = Better Write-up
 - ▶ The Questionnaires come out before some answers may be known.
 - ▶ Result in emails or phone calls as the project is designed.



2

Social

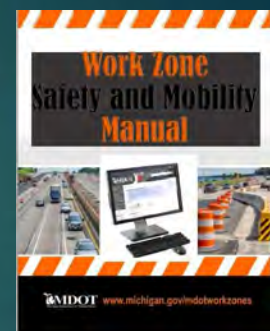
- ▶ Covers:
 - ▶ Fee ROW, Easements, Grading Permits.
 - ▶ Access to businesses and properties.
 - ▶ Pedestrian facilities



3

Pedestrian Facilities

- ▶ Look at the Project Area using Satellite Imagery
 - ▶ Sidewalks
 - ▶ Nonmotorized Paths
 - ▶ Desire Path or "Goat Path"
- ▶ ADA upgrades
 - ▶ Needed with: new road construction, reconstruction, rehabilitation
 - ▶ Optional on road maintenance: crack filling and sealing
- ▶ Mitigation is done by keeping adjacent pedestrian facilities open, Where and When Possible.
 - ▶ The MDOT "Work Zone Safety and Mobility Manual" (Chapter 5) Located at https://www.michigan.gov/documents/mdot/2018_WZSM_Manual_627313_7.pdf



4

Other Aspects of Social

- ▶ Non-Motorized Trails
- ▶ Waterway Closures
- ▶ Informational Public Meetings
- ▶ Rest Area and Park N Ride Temporary Closures



5

Detour

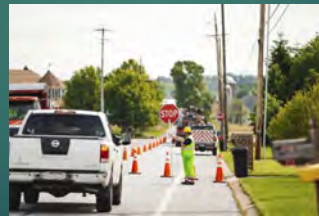
- ▶ Required for Review to:
 - ▶ Avoid potential environmental justice issues
 - ▶ Minimize or avoid other potential social issues
 - ▶ Maintain safe motorist movement
- ▶ For clearance I need:
 - ▶ Route of the detour
 - ▶ Duration of the detour
- ▶ Detours can trigger Controversy



6

Detour Mitigation

- ▶ Avoiding the detour with crossovers, temporary signals, flagging
- ▶ Shorten the detour by using local streets, with permission
- ▶ Timing the project to avoid the school year, major/local festivals holiday weekends
- ▶ Using different routes for trucks and car traffic
- ▶ Using signs to indicate that businesses are open during construction



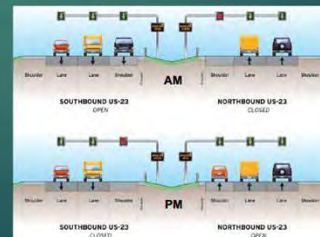
7

Controversy

Controversy is determined on an individual project basis

Projects with Potential for Controversy include:

- ▶ Changes in traffic patterns / function
- ▶ Permanent Road Closure or "Cul-de-sac" of a road
- ▶ Removal or closure of a pedestrian bridge
- ▶ ROW encroachments
- ▶ Displacements
- ▶ Active Traffic Management (ATM) lanes
 - ▶ Ramp metering and Dynamic Shoulder Use
 - ▶ US-23 Flex Route, North of Ann Arbor



8

Controversy

Projects with Potential for Controversy contd.

- ▶ Economic impacts
 - ▶ Removal of parking
 - ▶ Construction impacts
 - ▶ Long Detour / Bridge Closure
- ▶ Any job that MDOT Environmental or Region and Local staff feel has a chance to be controversial based on:
 - ▶ Location
 - ▶ Type of job,
 - ▶ History of similar jobs in the area

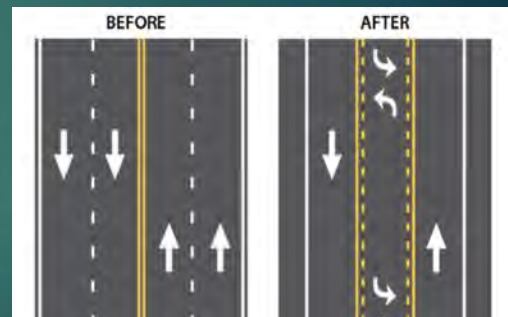


9

Controversy

Projects that will most likely need Public Meetings:

- ▶ Road diets. 4 to 3 lanes are the most common but any reduction in capacity is considered to be a road diet
- ▶ Roundabouts



10

Holding a Public Meeting

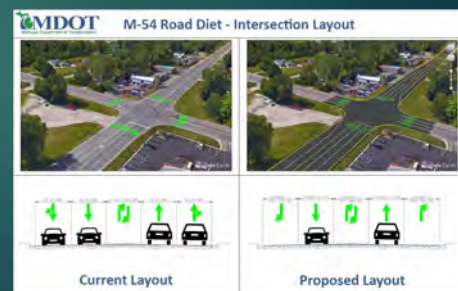
- ▶ Public Meetings can bring the opportunity to learn more about issues that matter to the community
- ▶ Public Meetings should be held by the Base Plan Date.
- ▶ There is a dilemma of having the meeting too early vs too late in the design process.



11

Holding a Public Meeting

- ▶ Meeting Recommendations:
 - ▶ Open house, Presentation, Town Hall
 - ▶ Tuesday, Wednesday, Thursday
 - ▶ At least 2 hours long, Late Afternoon /Evening
 - ▶ 4pm - 6pm and 5pm -7pm are the most popular
 - ▶ As close to the project as possible
 - ▶ Press Release 10-14 days before the meeting
- ▶ Visual Aids:
 - ▶ Map of Project Limits
 - ▶ Boards that focus on impacted areas
 - ▶ Micro Simulation



12

Holding a Public Meeting

Visual Aid Examples



13

Holding a Public Meeting

Forms to be used at the public meetings.

- ▶ Title VI. MDOT form 5400 page 5. This form is voluntary for the public to fill out, but must be available during the meeting.
- ▶ Sign-in sheet. Also located in form 5400 page 6. Every member of the public attending the meeting is asked to sign in on this sheet.
- ▶ Comment Sheet.

14

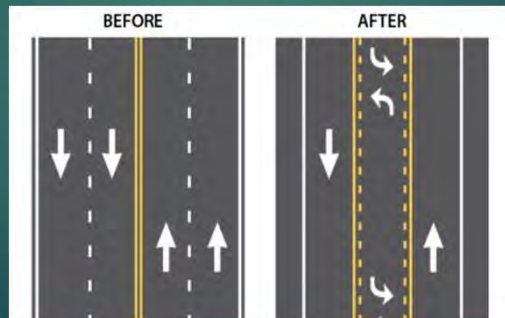
Controversy Mitigation

- ▶ Public comments can be used to improve a projects design
 - ▶ Changes in design that can address the public's concerns include:
 - ▶ Shortening or lengthening the project limits
 - ▶ Adding pedestrian paths
 - ▶ Refuge Islands on long crosswalks
 - ▶ Adding bike lanes
 - ▶ Adding parking
 - ▶ Lengthening turning queues



15

Thank You!



Josh Grab

517-241-4548

grabj@michigan.gov

16